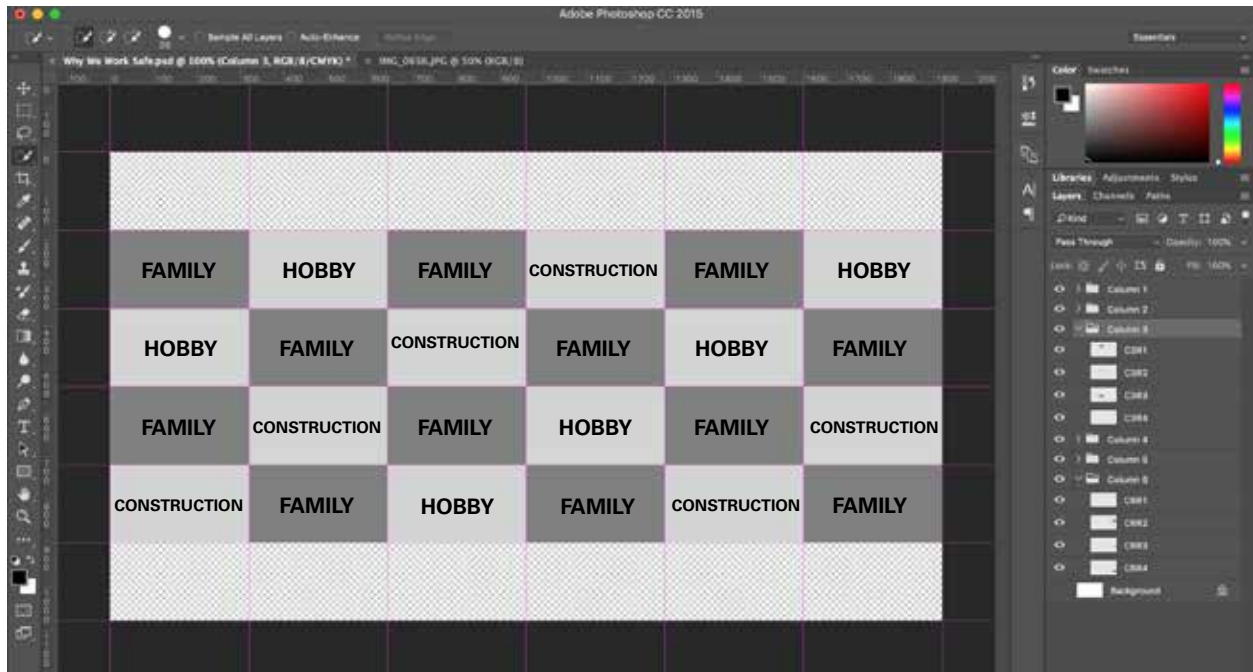




The screenshot displays the Adobe Photoshop CC 2015 interface. The main workspace is filled with a 5x5 grid of color calibration patches, including grayscale and color targets. The top status bar shows the document name '800\_0816.JPG @ 50% (RGB/8)' and a warning 'Why We Work Safepast @ 160% (Columns 5, 8, 9/CMYK)'. The right sidebar contains the 'Color' panel with a color bar and the 'Layers' panel, which lists several layers: 'Column 1', 'Column 2', 'Column 3', 'Column 4', 'Column 5', 'Column 6', 'Column 7', 'Column 8', 'Column 9', and 'Background'.

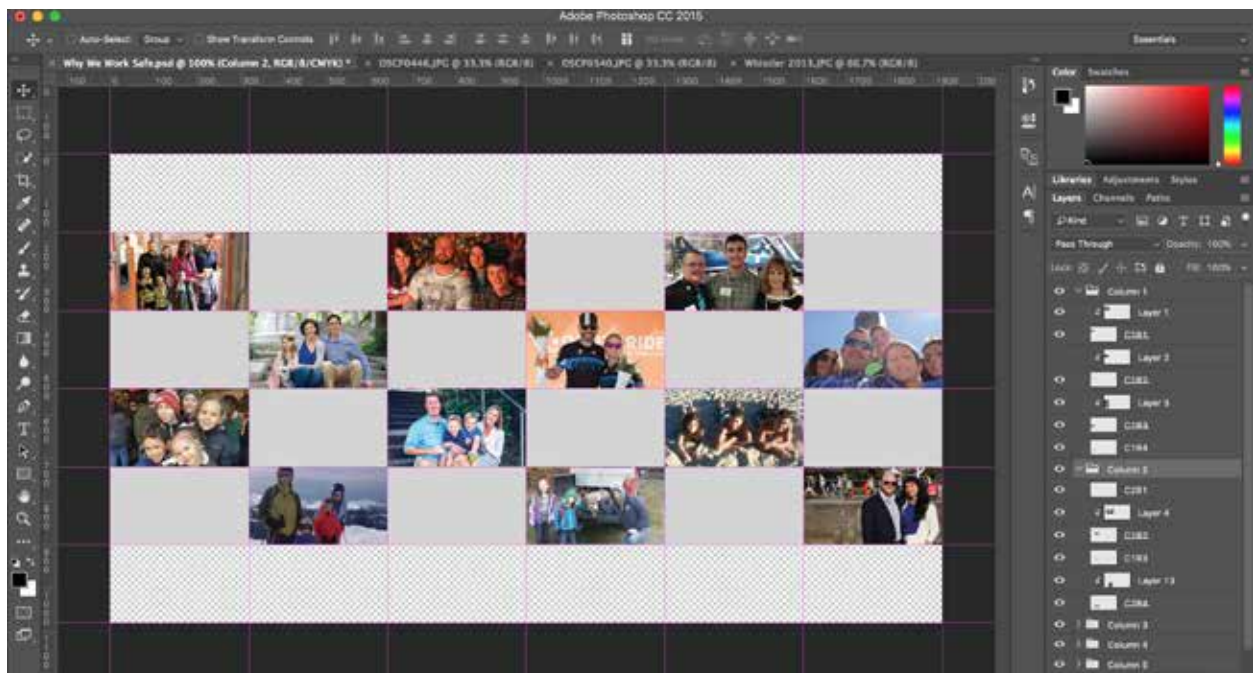
Create masks and organize by column and row. This may seem tedious now, but will be valuable as you create and navigate your collage

### Step 3: Organize Collage



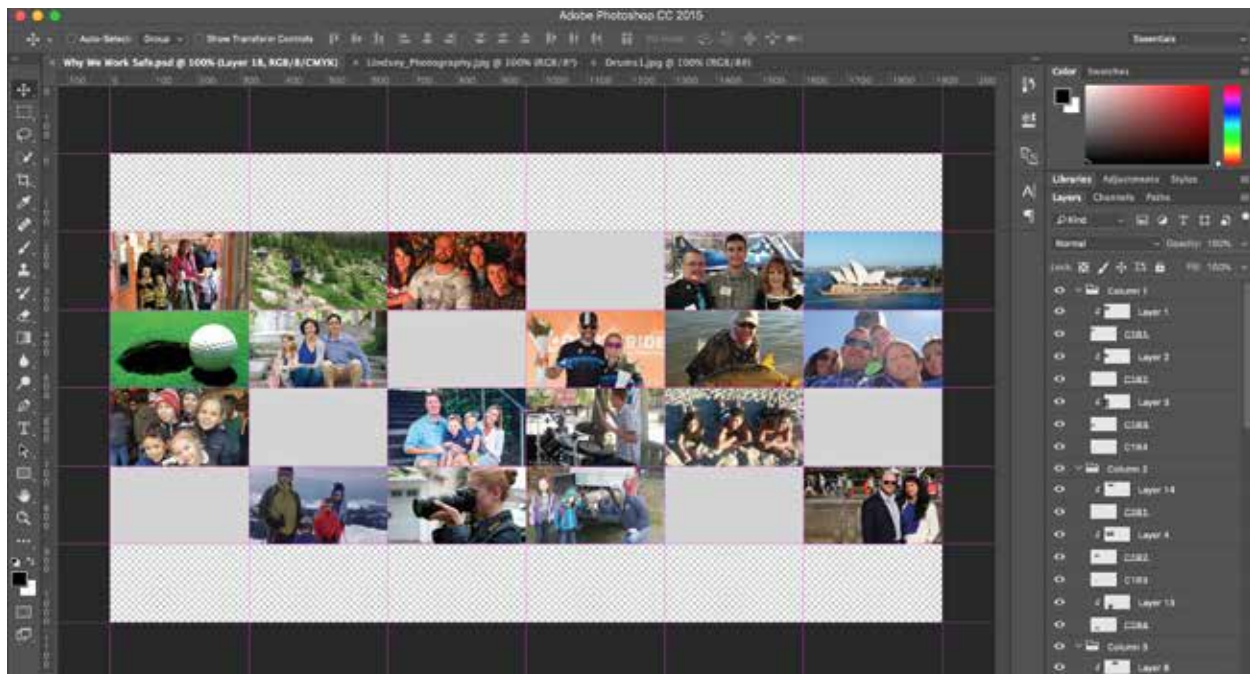
Establish base document and mark out guides.

### Step 4: Fill in the Columns



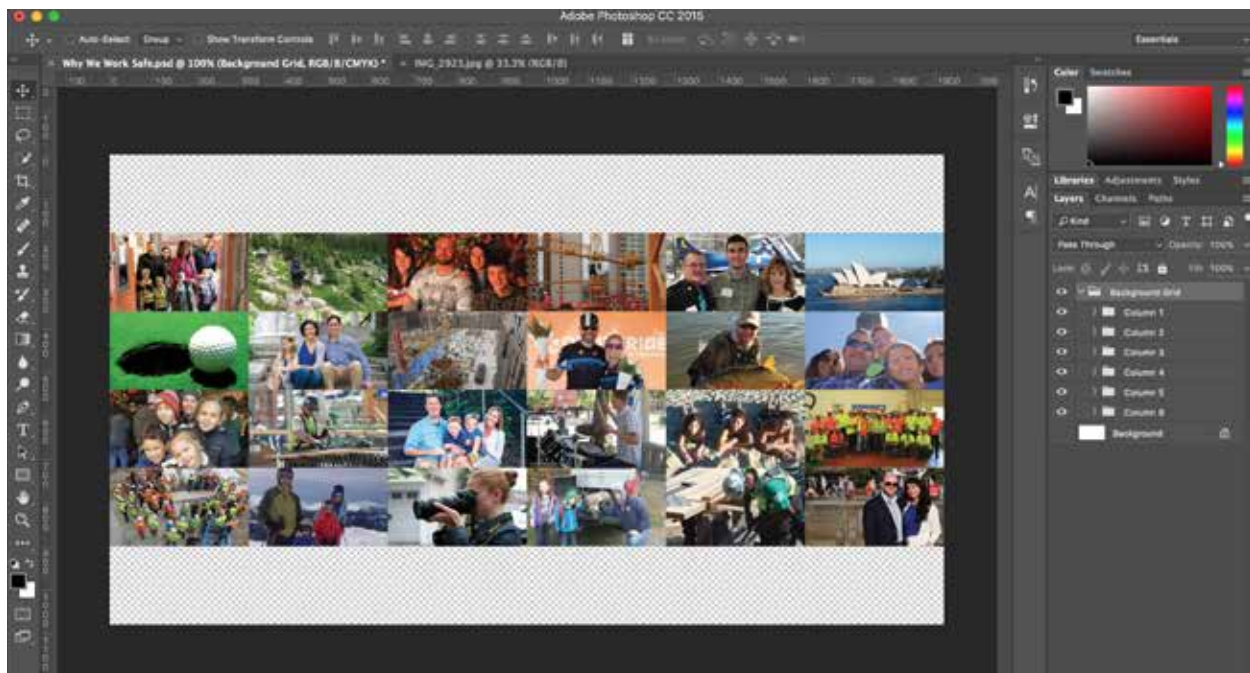
Bring edited photos into the working document and create clipping masks with the shapes created. I started by bringing in all the families first.

## Step 5: More Photos



Next I filled in the hobby photos.

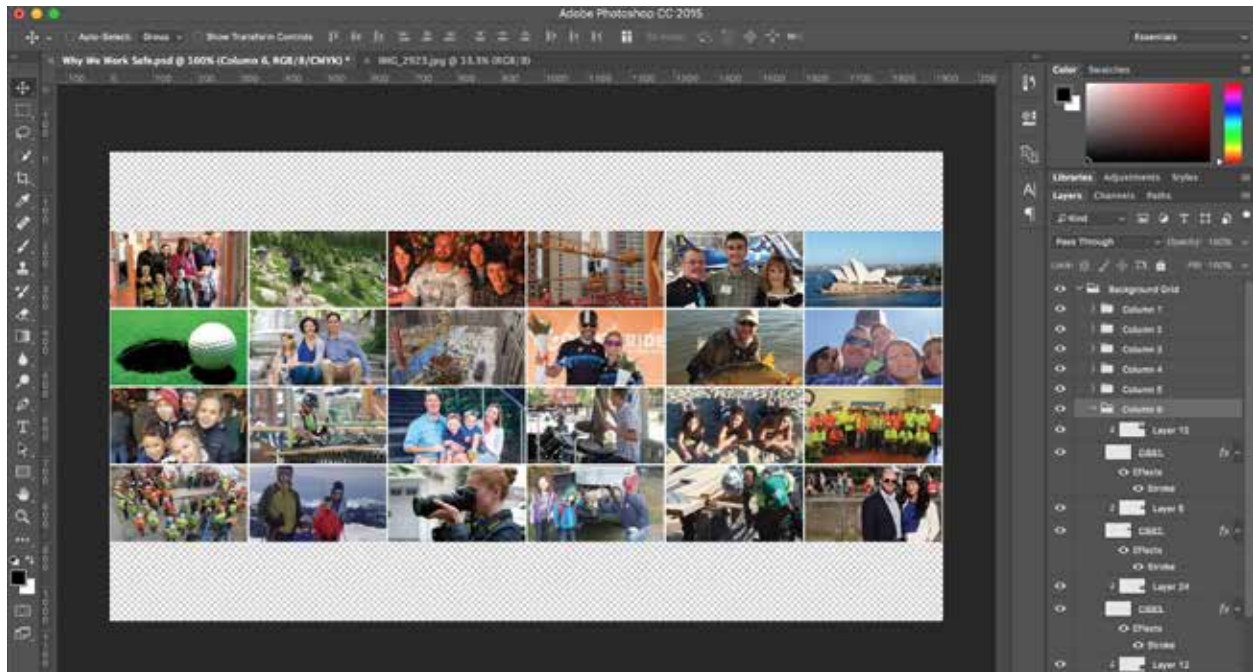
## Step 6: Final Images



Finally, I added the construction photos to complete the photo grid.v

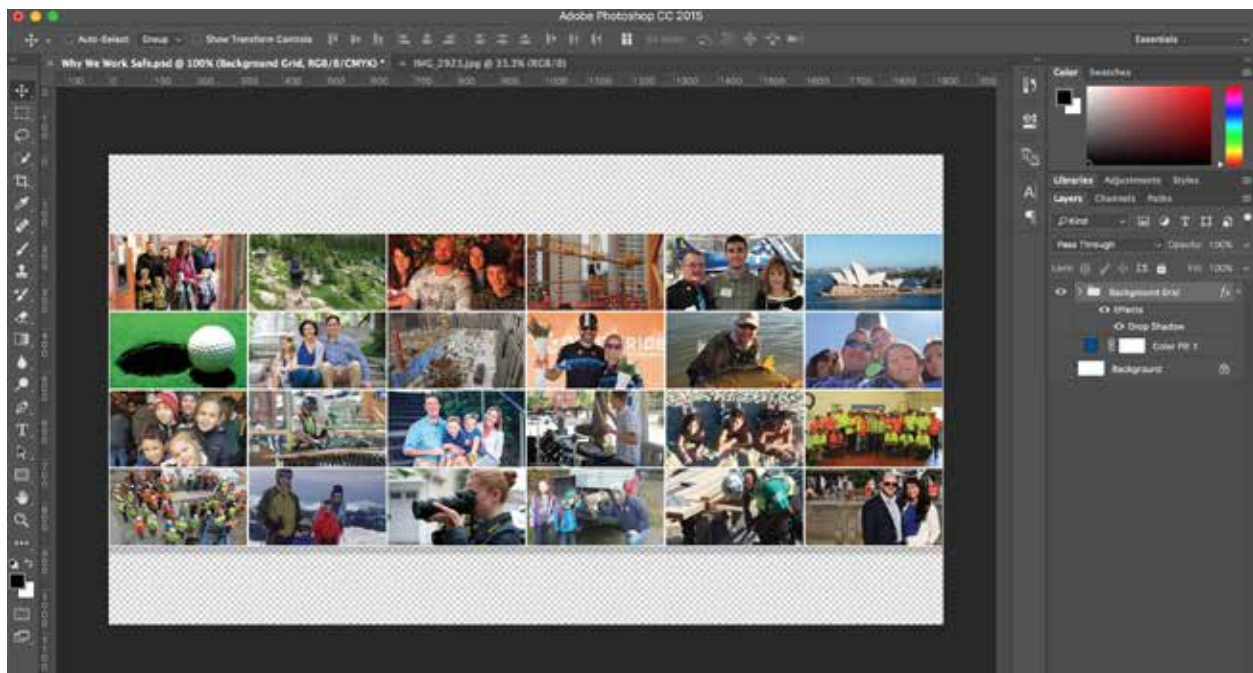


## Step 7: Apply Effects - Image Borders



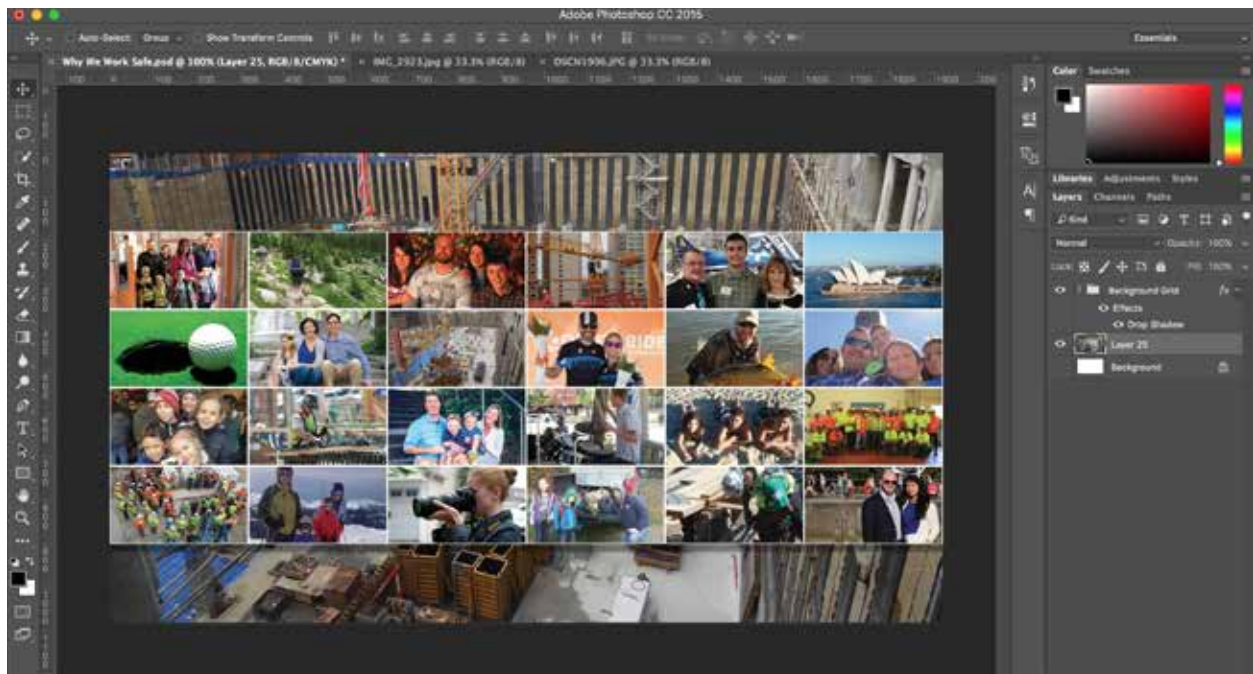
Following the tutorial, I added strokes to the images. Stroke = 2px, positioned inside, white. To organize layers I grouped them in folders under a master grid folder.

## Step 8: Drop Shadow



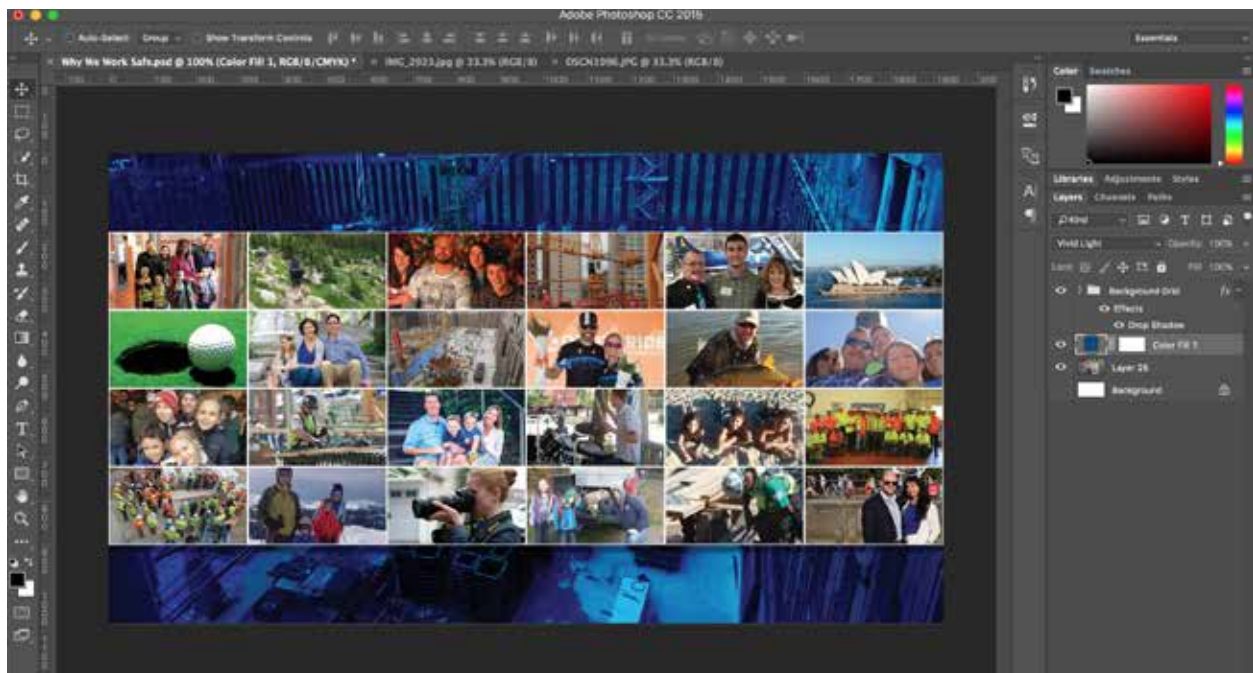
To give the grid some more depth I added a drop shadow.

## Step 9: Add a Background



I started the background by adding a construction site image.

## Step 10: Color Overlay



Next I created fill layer in our brand color, PMS 301C and changed the blend mode to Vivid Light.

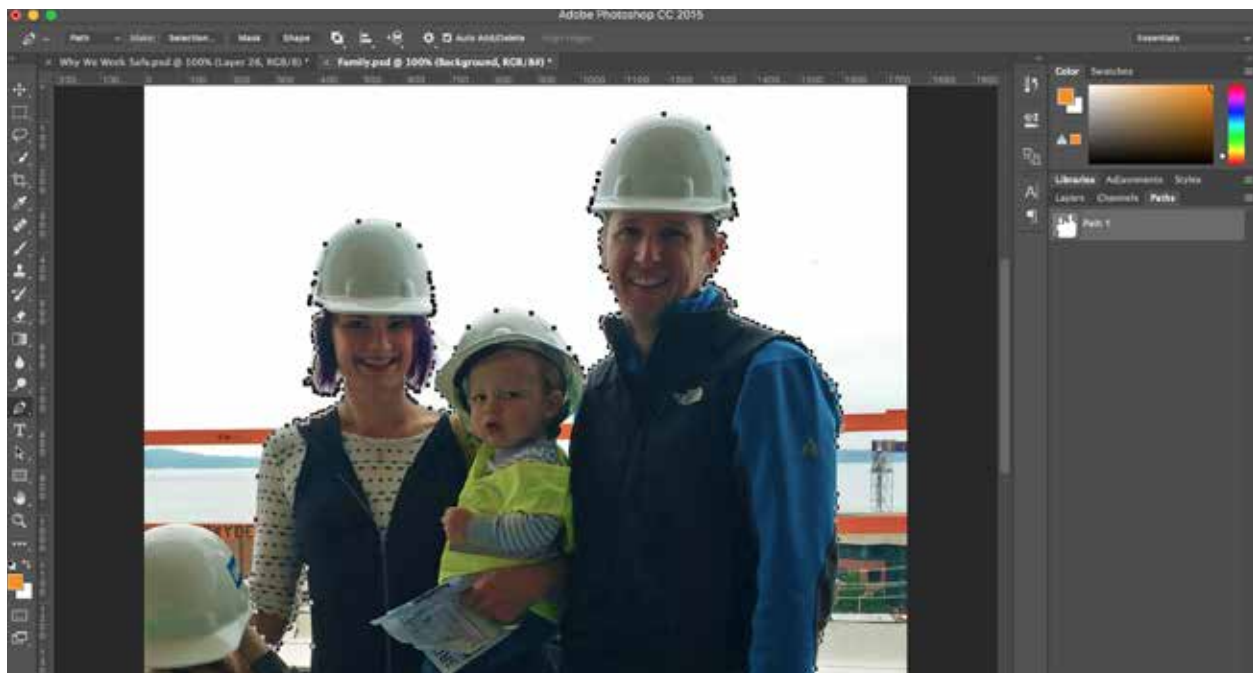


## Step 11: Orange Accents



To wrap up the background I added two orange bars to frame the grid.

## Step 12: Editing the Hero



My design included a large feature family intended to be the center of my collage. To accomplish this I set to work using the pen tool.

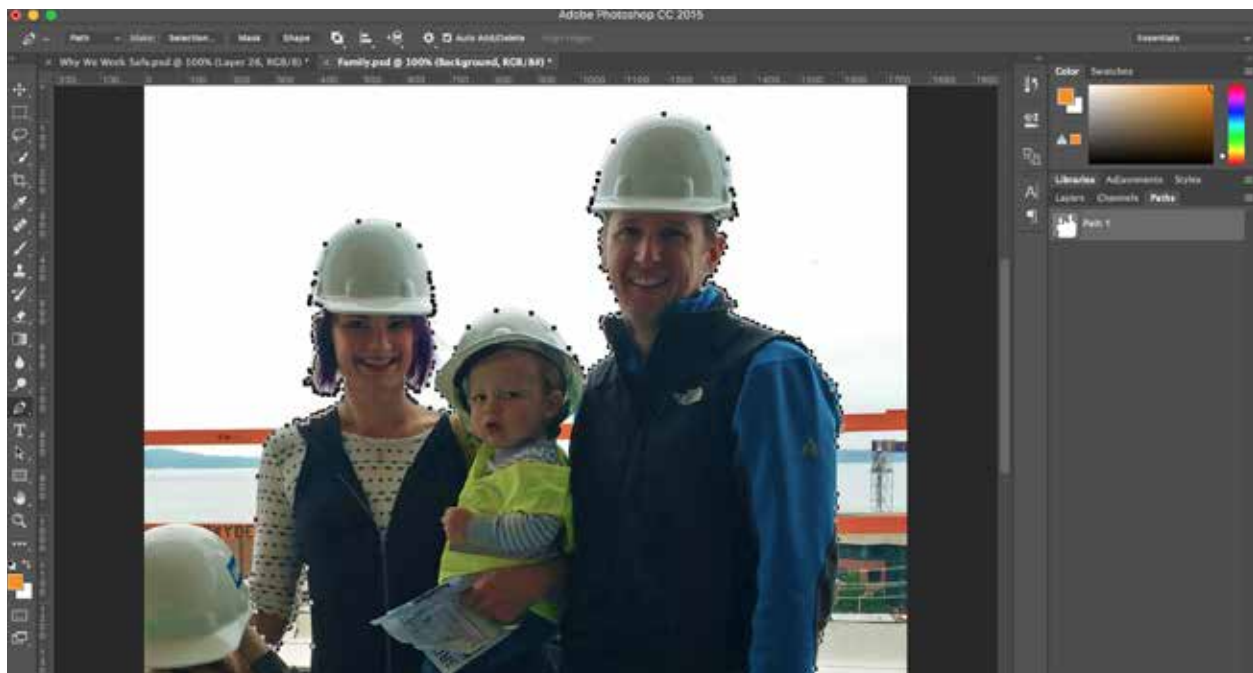
After some minor layer corrections I created a new path and began following the outline with the pen tool.

### Step 13: Orange Accents



To wrap up the background I added two orange bars to frame the grid.

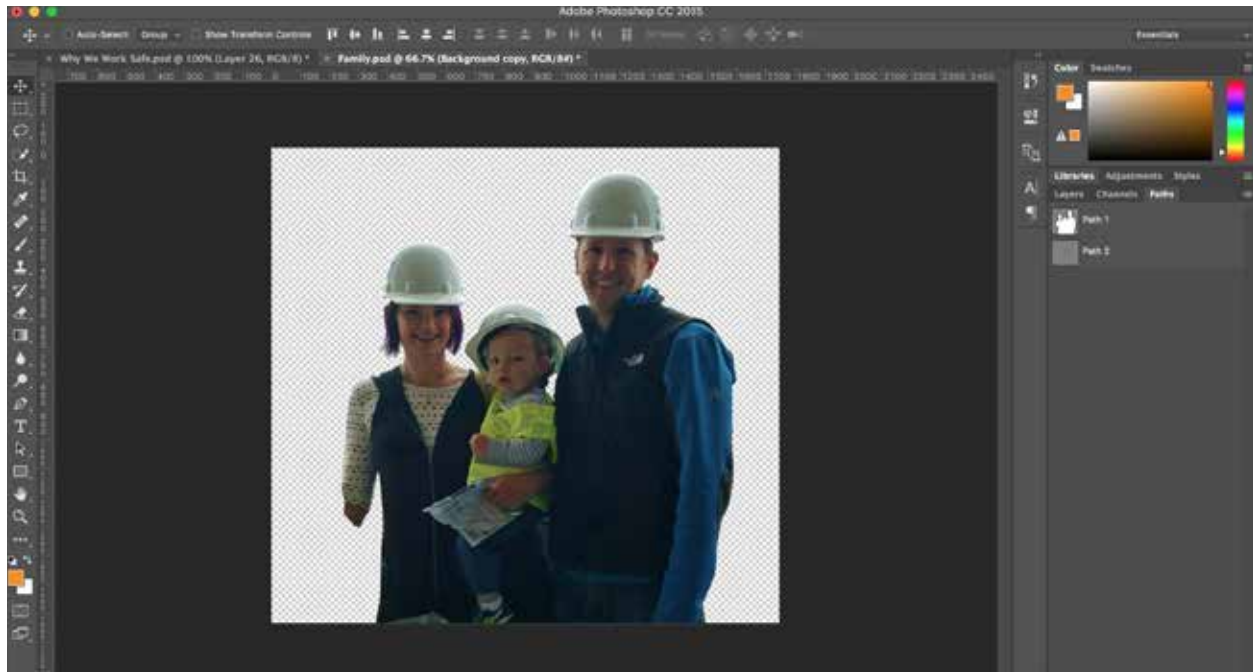
### Step 14: Editing the Hero



My design included a large feature family intended to be the center of my collage. To accomplish this I set to work using the pen tool.

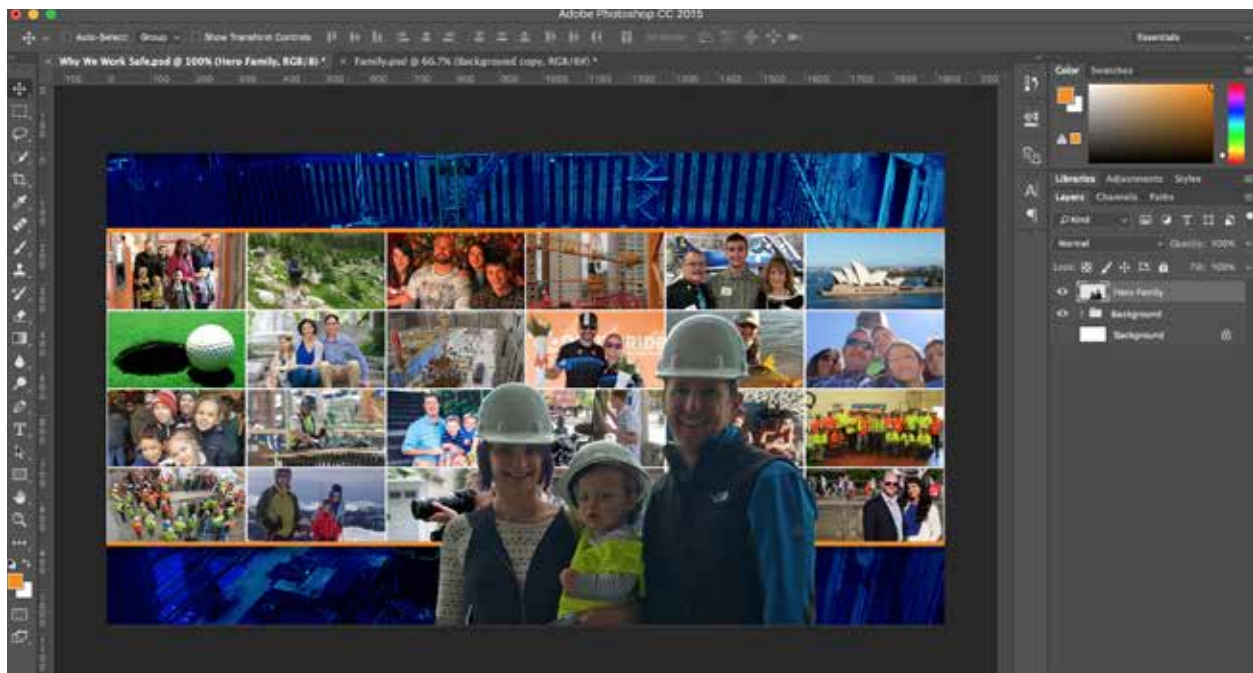
After some minor layer corrections I created a new path and began following the outline with the pen tool.

## Step 15: Delete Background



To finish up this image I made the path a selection and deleted the background, leaving only the feature family.

## Step 16: Adding the Hero to the Collage



The final step was to bring the hero family into the collage and position them in front.



## Step 17: Adding Text



Use the text tool to add a headline and add a stroke and drop shadow.

## Step 18: Final Text



The last step in creating this collage was adding the final copy to the bottom of the piece.

## Step 19: Finalizing the Image



Use the text tool to add a headline and add a stroke and drop shadow.

## Step 20: Enjoy the Collage!

